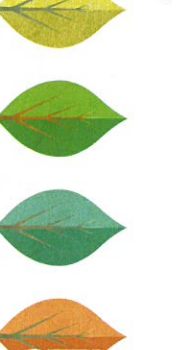




INTRODUCTION ON THE NEIGHBOURHOOD ADVICE-ACTION COUNCIL (NAAC)



The Neighbourhood Advice-Action Council (NAAC), founded in 1968, is a non-profit-making multiple social service agency. Our tenet is "Love Thy Neighbour as Thy Self". We inherit and uphold the social work professionalism to strive to serve all Hong Kong residents, in particular the most vulnerable, regardless of age and social status.

As a multi-service Non-Government Organisation rooted in Hong Kong with faith, hope and love, we uphold our collective responsibility to stimulate the extension of self-help and mutual support, promote social equity and justice and strive for excellence in professional service delivery for the development of a caring and sharing society.

SERVICE MISSION & OBJECTIVES

Discovery Bay Centre, a Sub-office of Tung Chung Integrated Services Centre of The Neighbourhood Advice-Action Council (NAAC), has been formally established in July 2009. Our service objectives are:

- TO ADVISE, COUNSEL OR PROVIDE OTHER FELICITOUS SERVICES TO STRENGTHEN AND SUPPORT THE PHYSICAL, EMOTIONAL AND SPIRITUAL WELL-BEING OF INDIVIDUALS AND/OR FAMILIES.
- TO ENHANCE FAMILY INTEGRITY AND ENCOURAGE HARMONIOUS RELATIONSHIP IN FAMILY.
- TO FOSTER A RESPONSIBLE AND RECIPROCAL RELATIONSHIP BETWEEN INDIVIDUALS AND THE ENVIRONMENT.

APPLICATION & WITHDRAWAL PROCEDURES

Application: Eligibility of different activities / services would be different. For details, please refer to pamphlets of specific activities / services.
Withdrawal: Residents have the right to withdraw from service by informing the centre via phone call or letter.

Fee:
 Annual Membership Fee Individual HK\$25
 Family HK\$80
 Counselling Service Free of Charge
 Program Fee Depend on Individual program

SERVICE TARGET

Residents in Discovery Bay

SERVICE CONTENT

- **Facility Rental Service:**
Specific activity rooms and recreational facilities are open to rent for all service users.
- **Professional Counseling Service:**
Through various professional interventions, our social worker provides emotional support to the individuals and families in need, with the aims to preserve and strengthen the family as a unit.
- **Developmental and Recreational Service:**



FAMILY SERVICE

FAMILY LIFE EDUCATION
 Professional social workers would organize different kinds of family activities. The main themes are **couple relationship, parent-child communication**, etc to **enhance harmonious relationship in family**. Different seminars, family outings, festival programs and volunteering activities would be organized.

CHILDREN & YOUTH SERVICE

DEVELOPMENTAL GROUPS AND ACTIVITIES
 We would organize developmental groups and services to enhance **children and youth development** and discover their own **potentials** including **leadership training, adventure-based activities and volunteering**

INTEREST GROUP/ACTIVITIES
 Different interest groups would be organized such as **drama group, dancing club** to cultivate talents of children and youth.

ADULT & ELDERLY SERVICE

ADULT EDUCATION
 Different adult education courses on topics such as **First Aid, Information Technology and Calligraphy**, etc... aiming at **self-enhancement and life-long education**.

INTEREST GROUP
 According to different ages and cultural groups, various interest groups, such as **cosmetic group, Tai Chi group, Chinese Kung Fu** would be organized for **better use of leisure time and enhancing self-development**.



Inspiring Well Rounded Development



1/F, Discovery Bay North Integrated Services Centre, 99 Siena Ave, Discovery Bay, Lantau Island.
 大嶼山愉景灣海澄湖畔路99號愉景灣北綜合服務中心一樓

Printing date 出版日期 Sep 2020 二零二零年九月
 Copies 印刷數量 1,000